

The Rosedale Harvard Gulch Neighborhood Association exists to connect our neighbors with each other, provide information that is of interest or importance, and to develop pride and ownership in our beautiful neighborhood. We create opportunities for community members to learn about issues that impact them, to be empowered to make decisions and take action as they choose.

Dear Rosedale Harvard Gulch Friends and Neighbors!

Since Rosedale-Harvard Gulch Neighborhood Association's (RHGNA) grassroots inception in 2008, our purpose is to:

- foster a sense of community, place, and history through member participation;
- inform, educate and ensure appropriate representation of members in matters pertaining to the neighborhood; and
- provide a forum for members to participate, with civility and respect, in an open, multi-partisan dialogue.

Our accomplishments have been plentiful:

- provided a communication link with Denver on proposed rezoning (2009)
- set up informational meetings (regarding lights at football stadium, gas pumps at Safeway, quarterly police attendance at meetings, RTD updates)
- educated neighbors on coyote presence and prompted Denver to install warning signs in park (2012)
- published quarterly newsletters, distributed by our fantastic Block Captains
- established website and an email list to disseminate information quickly (to over 500 neighbors)
- sponsored annual picnics - the next one is August 12 (see below)

In coming years, we hope to focus on improvements within our neighborhood:

- resolve problems with water retention at the Harvard Gulch pond
- update exercise equipment at park
- document history of neighborhood and build Children's Home memorial (page 7)
- reduce crime and improve safety (page 2)

These accomplishments are by your neighbors who volunteer their precious time to make our neighborhood a wonderful place to live, work and play in. Best wishes to you all,

Elissa Augello Bill Bloch
Co-President, RHGNA Co-President, RHGNA

PLEASE JOIN US FOR OUR ANNUAL RHGNA COMMUNITY PICNIC

Sunday, August 12, 2012 2-4:30 pm

By the Harvard Gulch playground (Iliff & Logan)

LIVE MUSICIANS, door prizes, **FOOD**, lawn games, shade shelters, **FRIENDS, OLD AND NEW**. Enjoy the last day of the 2012 pool season. Bring chairs, and food to share if you like.

2011 picnic photos by Lynne Scholfield ⇨

Our Neighborhood

RHGNA boundaries extend between South Downing, East Evans, South Broadway, and East Yale surrounding Harvard Gulch and Kunming parks in south central Denver, CO.

Membership Donations of \$15 may be mailed to RHGNA

P.O. Box 101512
Denver, CO 80250-1512
or visit www.rhgna.org

Harvard Gulch Recreation Center SUMMER HOURS

Mon through Fri: 9am-7pm
Sat: 9am-1pm Sun: Closed



Thanks for reading the RHGNA newsletter. We hope you enjoy it.

MEMBERSHIP IS FREE! JOIN OUR EMAIL LIST FOR UP-TO-THE-MINUTE ALERTS AND INFORMATION.

YOU ARE A MEMBER - If you live, work or own property within our boundaries, you are automatically a member of the Association. **CONNECT VIA EMAIL** - If you choose to receive an electronic newsletter, you'd help RHGNA save paper, printing costs and delivery time! You'll also receive timely information such as special events, CRIME REPORTS and WILDLIFE SIGHTINGS. Please send your email address to Catherine_Wise@dpsk12.org. Include your full name and physical address and we'll get you on the e-list. **PARTICIPATE** - To learn more about how you could be involved, please contact our Co-Presidents, Elissa and Bill. **CONTRIBUTE** - Please consider contributing \$15 per year. These donations cover operating costs such as signs and flyers to promote meetings and events, hosting the annual picnic, and maintaining the RHGNA website. Donate at www.rhgna.org, by mail at RHGNA, P.O. Box 101512, Denver, CO 80250-1512, or at a general meeting.

CONTACT US!

RHGNA Board Members

Bill Bloch, *Co-President*
720/244-0344
whitescarf@zianet.com

Elissa Augello, *Co-President*
303/698-2468
augello2468@msn.com

Carri Currier, *Secretary*
303/908-4166
carri@catsliparts.com

Lucy Barnett, *Treasurer*
303/882-7036

Committee Chairs

Gregg Batchelder-Adams
Denver Parks & Recreation Chair
303/733-7943

Amy Beck, *At-Large*
303/726-9290

Wendy Girnt *Safety/Schools*
Chair 720/621-5787

Pam Hamilton, *At-Large*
303/744-9195

Lynne Scholfield,
Membership 303/722-4508

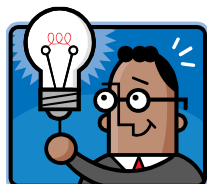
Jennifer Tomeny, *At-Large*
and INC Liaison 303/777-7514

Cathy Wise, *Newsletter*
303/912-9101

Craig Bouck, Block Captain
Coordinator 303/722-9676

RHGNA Address

P.O. Box 101512
Denver, CO 80250-1512
or visit www.rhgna.org



RHGNA Sheds New Light On Neighborhood

By Wendy Girnt, RHGNA Board

Have you noticed the lovely golden glow that has settled over our fair neighborhood at night? The street light check has been completed by public service. Yes, that really was a crew from Xcel in your alley at 2:00 am! Approximately 60% of our street lamps were replaced. All bulb and cover sites were washed. This project began when the RHGNA Board contacted Xcel in an attempt to return to white lighting, to brighten our streets at night and perhaps deter crime. We were told we could not return to the old, much more expensive, white lighting, but Xcel would check our lighting for maximum output. During the next 120 days, our street lamps were checked for candle power output. Those lamps at less than 60% output were replaced. Only two neighbors were sent letters of "reprimand" (yes, home owners, if the pole is on your property, you are responsible for keeping it clear of foliage and other stuff - who knew?). Another example of your RHGNA Board working for you!



Harvard Gulch Vegetable Demonstration Garden on Fast Forward!

Merrill Kingsbury, CSU Extension

With the record high temperatures and recent rainfall, the vegetable demonstration garden located at the corner of Iliff and Emerson in Harvard Gulch Park is growing in record time! Since the garden was planted in late May, we have already harvested over 100 pounds of lettuce, squash and beets. All vegetables from the garden go to feed the homeless at St. Francis Center in downtown Denver. The garden is growing so fast that the vegetable seedlings that we are growing after we harvest a crop are not ready yet, so there are a few empty spots waiting to be filled! The vegetable garden is sponsored by CSU Extension, Denver Parks and Recreation and Grow Local and maintained by Colorado Master Gardener volunteers. **Have gardening questions?** The CSU Extension office located at 888 E. Iliff Ave. (at Iliff and Emerson) has the answers to your lawn and garden questions! Stop by any time Monday-Friday 8am-5pm to have your questions answered by a Colorado Master Gardener. We can also be reached by phone at 720-913-5278 or by email denvermg@colostate.edu. Our Colorado Master Gardeners also answer gardening questions at the Cherry Creek Farmers Market every Wednesday and Friday morning.

Intrigued by neighborhood history? Attend the upcoming historic walking tour (page 3), and learn about our new RHGNA History Committee (page 7)!



DENVER COUNTY FAIR - August 10-12, 2012

at the National Western Complex

This annual event celebrates the creativity and personality of Denver, with events, exhibitors, blue ribbon competitions and more! **REVOLUTIONARY FAIR DESIGN!** 12 interlocking indoor pavilions, each with its own exhibitors, vendors, stage demonstrations, and entertainment! **WHAT WILL YOU ENTER?** Enter any of our dozens of open competitions - Blue Ribbons come with a \$50 cash prize, too! Compete with your best pies, crafts, housepets and more!

Competitions are open to all residents of Colorado. Urban homesteading, backyard farming, healthy cooking, homemade goods, arts and crafts, and local food have fresh popularity, and the Denver County Fair is raising the bar even higher. **VISIT** <http://www.denvercountyfair.org/> Poster Artist: Mark Penner Howell

A WALK AROUND HISTORIC ROSEDALE / HARVARD GULCH

Sunday, September 9, 2012 11:00 am to 1:00 pm

You don't want to miss this **FREE** historic hike! Did you know that, back in the day, the state orphanage was located near Harvard Gulch and the first man to ever be branded as "public enemy number one" lived near South Emerson Street and Iliff Avenue? **Learn plenty of fun facts in this walking tour with local historian and author Phil Goodstein.** The tour will start from the benches in Harvard Gulch Park, near South Logan and Iliff Ave. Goodstein, who knows Denver's history better than anyone, is the author of several books, including *"The Ghosts of University Park, Platt Park, and Beyond"*. Books will be available at this event for \$20. **This is a Rosedale-Harvard Gulch Neighborhood Association sponsored event.** Event is subject to weather. Contact Phil Goodstein at 303-333-1095.



We have joined your neighborhood!



2450 South Downing Street
1/2 block north of Porter Hospital on S Downing



2102 S Washington St 303.698.2811

www.campuscycles.com

Your Neighborhood Bike Shop

Ask About The Neighborhood Discount

Denver Parks and Recreation Needs Volunteers by Gregg Batchelder-Adams

To register for either of these Denver Parks and Recreation events, call the volunteer hotline at 720.913.0330.

CH2M Hill Fall RiverSweep

September 29, 2012

8:00 a.m. - 12:00 p.m.

In partnership with the Greenway Foundation, 300 volunteers are needed to clean up an 11-mile stretch of the South Platte River Trail. Volunteers are needed for trash pickup, to weed designated areas, to clean the banks and seed natural areas from border to border along the South Platte River Trail in the City and County of Denver.

Put The Beds to Bed (PTBTB)

October 13, 2012

8:00 a.m. - 1:00 p.m.

Groups, families, and individuals from the neighborhood and surrounding area are encouraged to participate. Volunteers ages 9-17 must be supervised by an adult. Over 300 volunteers are needed at City Park and Washington Park to remove annual flowers, drag tarps, load flowers in trucks, over-turn dirt, and dig dirt at this annual event.



Beat the Heat at one of Denver's Mountain Parks: Winter Park Resort Story and Photo by Gregg Batchelder-Adams

The Denver Park system opened its first park in 1868 and now has over 200 urban and *mountain* parks, including Winter Park Resort, which is the largest city-owned ski area in the country. The resort, located about 70 miles from Denver, opened in 1939 and was owned and once operated by the City and County of Denver. In 2002, the City partnered with a Canadian company (Intrawest), who has operated the resort since then. The resort is home to one of the world's largest and oldest disabled ski programs, the National Sports Center for the Disabled. In the early 1930s, members of the

Colorado Arlberg Club began clearing the first man-made ski trail in the western part of the United States. The trail now known as the Mary Jane Trail, was named after a local lady of pleasure. Mary Jane, according to legend, acquired the land on which the existing trail now lies, as payment from railroad workers and miners for her favors! While Mary Jane is described as being no lady, her namesake trail is one of the finest in the country with numerous mogul runs. The area has lots of summer activities (boating, mountain biking, hiking, rafting, hot springs, fly fishing, rodeo, etc.) and the weather forecast for July calls for highs in the mid-70's and lows in the mid 40s-low 50s!!

Seeking Shade for the Harvard Gulch Park Playground by Catherine Wise, RHGNA Board

To create a cool oasis for family members watching their little ones at the Harvard Gulch Park playground, Rosedale neighbor Keely Buchanan was kind enough to inquire about the potential for building a shade structure. In response, a city representative noted that there are many areas in need of shade shelters in Denver parks, especially adjacent to playgrounds. Unfortunately, no City funds are currently available for these types of new amenities. They are currently partnering on a health study related to shade shelters and the protection they provide from UV rays. As part of that study, the City will get some shade shelters installed (at no cost to the City) in approximately 6 parks each year for the next 3 years. Harvard Gulch Park will be considered for a possible shade shelter location next year (installation in summer of 2013). But because park locations are picked randomly (as required by the scientific study) that does not guarantee that it will be selected for an actual shelter installation site. Selections will be announced in the winter of 2012. If the park is selected, the shelter would be located over the three picnic tables directly adjacent to the playground. If Harvard Gulch is not selected in the study, the City would consider working with the neighborhood in raising funds through the community, to pay for a shelter (though no funding by the City is available). The overall cost of the shelter would be determined by the size, location and type.

Harvard Gulch Golf Course Open Night and Day!! This nine hole par 3 located at 660 E. Iliff Avenue, is a great place to practice your short game. "The Gulch" offers a fun and relaxed environment for golfers of all ages and skill levels. The course is open to the public year-round, weather permitting. The clubhouse hosts private events as well. **Kids 16 and under are free with a paying adult Mon-Thurs from 10:30am-2:30pm.** The course is open for **Night Golf on Saturdays from 9pm-11pm.** This is a one-of-a-kind golfing experience, using L.E.D. golf balls, glow sticks, L.E.D. course markers, and custom flagsticks. Spots are limited, so book yours today! Please call ahead for tee times or to book an event. Harvard Gulch 303-698-4078.

French Students find Summer Homes in Rosedale

Contributed by neighbor Marge Benning

Those of you on our email list will remember the announcements this Spring about opportunities for local families to host students from France through Compass USA. We are pleased that many Rosedale neighbors welcomed students into their homes and have been deeply gratified by the experience.

This is from Colleen Nyhus, who is hosting Yanis, a 15 year old boy who took a soccer camp at DU while he was here:

"Hosting our French student this summer has been a wonderful experience. Not only has he learned many things about American culture, he has taught us many things about France, French cuisine and the language. Some of the activities we have done were swimming at the Harvard Gulch pool, playing golf at the Harvard Gulch par 3 course and hiking in Glenwood Springs. We have also developed a great relationship with his family and Skype every week. We hope to visit them sometime in the future. Hosting an exchange student was such a great idea and we will have these memories forever!"



Yanis (at left) with his Denver family this summer

Porter
Adventist
Hospital



FREE Community Classes

To register please call 303-777-6877 FREE parking, FREE light refreshments

For more information on all of the events please visit porterhospital.org/events

Sept 8 7:00am - 12:30pm

Porter Women's Expo *(for more details, see back page)*

Stay Healthy Above and Below the Belt! A morning for you featuring informative health presentations, free and low cost screenings and luxurious pampering. Porter Adventist Hospital, 2525 S. Downing St, Denver, CO 80210

Sept 27 1:30pm - 2:30pm

What You Need to Know About Stroke

Learn how to recognize the symptoms, identify the risk factors and follow the latest preventative measures. Porter Place Retirement Living, 1001 E Yale Ave, Denver, CO 80210

Sept 29 Noon - 4:30pm

Arthritis Education Day

Meet the experts and discover the latest treatment options for osteoarthritis, learn how to manage your symptoms and get proven exercise tips. Porter Adventist Hospital, 2525 S. Downing St, Denver, CO 80210

Oct 17 5:30pm - 7:30pm

The Cooking Cardiologist

Learn how to cook simple, delicious and heart healthy meals, with a demonstration by The Cooking Cardiologist. Gather information on how to keep on track with your sensible eating habits as we go into the holidays! Porter Adventist Hospital, 2525 S. Downing St, Denver, CO 80210

Oct 23 5:30pm - 7:30pm

Spine & Back Pain; What Treatments Work & What Don't

Are you confused about all of the treatment options available for back pain? Find out how to navigate through all of the information out there and find out what may work for you. Porter Adventist Hospital, 2525 S. Downing St, 80210

Oct 25 1:30pm - 2:30pm

Don't Take Falls Lightly

Are you worried about falling over, especially as we approach the winter months? Learn about safety tips to reduce your risk of falling. Porter Place Retirement Living, 1001 E Yale Ave, Denver, CO 80210

Nov 14 12:30pm - 2:00pm


Sleepless in Denver? We Can Help


Come to this class and learn about treatment options for sleep disorders, including insomnia, sleep apnea and snoring. Heritage Club Denver, 2020 S. Monroe St, Denver, CO 80210



SKEETERS EVERYWHERE

By Amy Beck, RHGNA Board



The City of Denver heard our concerns about the high number of mosquitoes in the neighborhood and took swift action. Routine monitoring occurs weekly at approximately 50 sites throughout the city to identify hot spots (isolated pockets that are prone to mosquito productivity). Two known hot spots in Harvard Gulch Park are monitored regularly, however, the infestation that began in June and continued into early July was due to a hot spot in the Gulch just east of Downing. Once this area was identified, the city began treating it weekly, and also the diversion channel that enters the park from the east at Ogden and the area in and around the pond.  **Stagnant water provides the breeding ground for mosquitoes.** Rainfall is the best defense for hot spots along Harvard Gulch as it flushes out areas of standing water and washes larvae downstream towards the Platte River. The rain that fell the weekend of July 7-8, along with the efforts of treating the hot spots, brought some relief to the neighborhood as the mosquito population dropped off significantly in the following few weeks.

 The city did convey that it is seldom one hot spot that causes an infestation like our neighborhood has experienced this year. Every neighbor can do their part by monitoring your property for standing water. Bird baths, watering cans, wheelbarrows, buckets, planters, pools, gutters and fountains are just a few common areas where mosquitoes will breed. **Please check your property frequently for a container collecting stagnant water, empty it and then turn it upside-down so it does not refill.** In the case of standing water in gutters, pools and fountains, please perform the necessary maintenance to ensure that water keeps moving.

If you know of a neighbor with standing water on their property, please ask them to help the entire neighborhood by removing the source of the water. The mosquito population may continue to fluctuate as the city works to bring it under control. **If you have any concerns about standing water, or the mosquito issue, please call 311.**  JOIN OUR NEIGHBORHOOD EMAIL LIST if you would like to report a possible hot spot or receive an update on the efforts of the city to manage the issue. Contact Catherine_wise@dpsk12.org to add your name. 

Rosedale Garden Annual Garden and Produce Sale

August 18th 8-2 pm
on Logan, south of Iliff.

Buy fresh vegetables, herbs and flowers, picked fresh that day, or fresh salsa created entirely from contributed garden ingredients.

Many gardeners will contribute baked goods, and yard sale items. The money raised helps cover garden costs as well as special projects. Join us!!!

Educating The Mind Nurturing The Soul

Our emphasis is on Academic Excellence and Spiritual Growth.



Mile High Academy

711 E. Yale Avenue
Denver, CO 80210

303-744-1069

www.milehighacademy.org

Traditional College-Preparatory Christian School
Pre-School thru 12th Grade
Honors Program





Preschool children at the Colorado State Children's Home in 1955. Jim Lucero, in back row, is the second child from the right.
Source: www.coloradostatechildrenshome.org

"One day while us boys were working in the gardens the farm supervisor, Mr. Deckers, was working a team of horses near South Logan Street. While Mr. Deckers was working a man crawled through the fence and robbed him. There was crime back in those days too."

James R. Long, State Home Resident 1929 to 1938



This aerial view of the State Home grounds looking south was taken in 1963. Porter Hospital can be seen in the upper left corner of the photo.
Source: www.coloradostatechildrenshome.org

RHGNA History Committee Taps into the Past by Catherine Wise

About a dozen neighbors have joined forces to create the RHGNA History Committee. We plan to capture stories, photos and reference materials to preserve the colorful history of our beautiful neighborhood for future generations.

Many of our initial efforts will surround the Colorado State Children's Home which operated from 1896 until 1971 in what is now Harvard Gulch Park.

Long-time residents will remember the old Field House, also known as Campbell Hall, on Iliff that burned down in 1987. That majestic building was one of the last remnants of a large complex that once existed. The Edbrooke Gym still stands, the boiler house is now the Golf Clubhouse, and the Carla Swan nursery now houses the CSU Extension offices.

Jim Lucero, a founding leader of **Historic Colorado State Children's Home, Inc.** attended our Committee meeting and shared some of his recollections of living there as a child. We highly recommend that you explore the organization's website – which includes a detailed history, memories from "Homers", and dozens of touching photographs, including those on this page: www.coloradostatechildrenshome.org.

With support from the Home group, the CSU Extension and our neighbors, we hope to construct a memorial in the park, to commemorate the hundreds of orphaned children who spent their childhoods there.

Our vision is to incorporate an informative plaque and stones preserved from Campbell Hall into a CSU Extension garden that may be built near Iliff Avenue. This would provide a beautiful setting for reflection, and a dynamic, living environment for this memorial.

We will keep you all informed as these plans progress, since input and enthusiastic support from our community will be essential! We hope to create a meaningful space within the park that everyone will treasure. There will likely be a modest fundraising effort to bring this dream into reality. Your participation and support would be appreciated!

*If you have history to share, or would like to contribute to the memorial plan or our many other projects, please join us! Our **NEXT HISTORY COMMITTEE MEETING** will take place Wednesday, August 15, 6:30 – 8 pm at the CSU Extension Office, 888 E. Iliff Avenue.*

Land Home – Your Complete Mortgage Experts!

With every funded loan, a donation will be made in your name to Slavons School.*

- Mortgage banker, in business since 1988.
- Always competitive with interest rates and loan fees.
- In house underwriting, doc drawing, and funding to ensure a smooth loan transaction.

Land Home
FINANCIAL SERVICES, INC.



Mike Scheffler

Sr. Loan Officer
Cell: 720-255-5555
Fax: 888-796-5208
www.mschefflerloans.com
NMLS #243130
CO MLO #100034879

Equal Housing Opportunity Lender. Not a commitment to lend. *Applies to Mike Scheffler loans only. Land Home Financial Services 2042 Wooddale Drive, Suite 160, Woodbury, MN 55125. Minnesota Branch Registration #MN-BR-14173. NMLS #14173. Colorado Mortgage Company Registration Date: 4-13-12



*South Denver's Largest
Beer Selection*

**Proud Sponsor of the
Rosedale Harvard Gulch
Neighborhood Association**

MORGAN'S LIQUORS

Beer, Wine & Spirits

1200 E. Evans Avenue
Denver, CO 80210
303-777-6223 Phone
303-778-8830 Fax

We admire your thirst!

DON'T MISS PORTER'S FREE WOMEN'S EXPO

Saturday, September 8, 2012, 7 a.m. – 12:30 p.m.

STAY HEALTHY ABOVE & BELOW THE BELT: Porter's Women's Expo features fun, informative health presentations and the latest health-related products and services. Plus, take advantage of free BMI and blood pressure screenings and low-cost blood tests. Mammograms by appointment.

LUXURIOUS PAMPERING: Enjoy all the rejuvenating extras, such as chair massages, fashion and makeup consultations, aromatherapy, customized bra fittings, Zumba® classes, and more.

To register and to find details about the presentations and screenings or to learn about our other events, visit porterhospital.org/events today. To register by phone, call **303-777-6877**.

Porter Adventist Hospital



2525 S. Downing St. • Denver, CO 80210 • porterhospital.org/events

Vendors and presenters are subject to change. Porter Adventist Hospital is a member of Centura Health, Colorado's largest hospital and healthcare network. Centura Health complies with the Civil Rights Act of 1964 and Section 504 of the Rehabilitation Act of 1973, and no person shall be excluded from participation in, be denied benefits of, or otherwise be subjected to discrimination in the provision of any care or service on the grounds of race, religion, color, sex, national origin, sexual preference, ancestry, age, familial status, disability or handicap. Copyright © Centura Health, 2012.



Free light refreshments and parking.